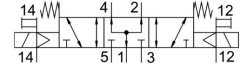
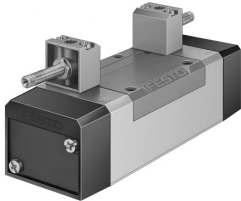


# Air solenoid valve MFH-5/3B-D-3-S-C-EX

Part number: 535986

FESTO



## Data sheet

Feature	Value
Valve function	5/3, pressurized
Actuation type	Electrical
Width	65 mm
Standard nominal flow rate	4000 l/min
Pneumatic working port	Sub-base, size 3 as per ISO 5599-1 G1/2
Operating voltage	Via solenoid coil, to be ordered separately
Operating pressure	-0.9 bar ... 16 bar
Structural design	Piston gate valve
Reset method	Mechanical spring
CE marking (see declaration of conformity)	as per EU explosion protection directive (ATEX)
ATEX category gas	II 2G
ATEX category for dust	II 2D
Type of ignition protection for gas	Ex h IIC T4 Gb
Type of (ignition) protection for dust	Ex h IIIC T105°C Db
Explosive ambient temperature	-5°C ≤ Ta ≤ +40°C
Degree of protection	IP65
Nominal width	14.5 mm
Width dimension	71 mm
Type code	MFH
Exhaust air function	With flow control option
Sealing principle	Soft
Mounting position	Any
Conforms to standard	ISO 5599-1
Manual override	Detenting via accessory Non-detenting
ISO code	369
Type of control	Pilot-controlled
Pilot air supply port	External
Flow direction	Reversible
Symbol	00991079
Lap	Overlap
Pilot pressure	3 bar ... 10 bar
Switching time off	75 ms
On switching time	36 ms
Max. positive test pulse with 0 signal	2200 μs

Feature	Value
Max. negative test pulse on 1 signal	3700 µs
Explosion prevention and protection	Zone 1 (ATEX) Zone 2 (ATEX) Zone 21 (ATEX) Zone 22 (ATEX)
Operating medium	Compressed air as per ISO 8573-1:2010 [7:4:4]
Information on operating and pilot media	Operation with oil lubrication possible (required for further use)
Vibration resistance	Transport application test with severity level 1 as per FN 942017-4 and EN 60068-2-6
Shock resistance	Shock test with severity level 2 as per FN 942017-5 and EN 60068-2-27
Temperature of medium	-10 °C ... 60 °C
Noise level	85 dB(A)
Pilot medium	Compressed air as per ISO 8573-1:2010 [7:4:4]
Ambient temperature	-5 °C ... 40 °C
Product weight	1040 g
Electrical connection	Via F coil, to be ordered separately
Type of mounting	On sub-base With through-hole and screw
Pilot exhaust air port 82	M5
Pilot exhaust air port 84	M5
Pilot air port 12	Sub-base, size 3 as per ISO 5599-1
Pilot air port 14	Sub-base, size 3 as per ISO 5599-1
Pneumatic connection 1	Sub-base, size 3 as per ISO 5599-1
Pneumatic connection 2	Sub-base, size 3 as per ISO 5599-1
Pneumatic connection 3	Sub-base, size 3 as per ISO 5599-1
Pneumatic connection 4	Sub-base, size 3 as per ISO 5599-1
Pneumatic connection 5	Sub-base, size 3 as per ISO 5599-1
Note on materials	RoHS-compliant
Seals material	HNBR NBR
Housing material	Die-cast aluminum